

NCD-TYPE

ASPHALT IMPACT CRUSHER



Salient Features

NCD crusher is developed for special application, such as crushing Asphalt content material in recycling plant, where less installation area, high capacity, long life with stable operation, is essential.

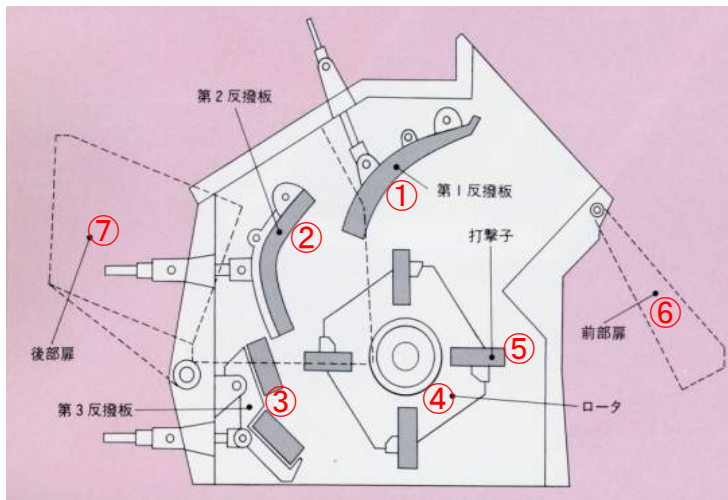
Taiheiyo Engineering Corporation

SA Building, 5th Floor, 2-17-12, Kiba, Koto-ku,
Tokyo 135-0042, Japan
Phone : +81-3-5639-6073 FAX : +81-3-5639-6061
E-mail : overseas_sales@taiheiyo-eng.co.jp
Website: www.taiheiyo-eng.co.jp/en/

Main Feature

- 1 Large inlet opening avoids the clogging problems and assures the continuous operation.
- 2 Maintenance doors with large opening are operated by hydraulic cylinders at the front side and the rear side, thus permitting complete access to the internal wear parts.
- 3 Wear impact plates are designed for easy maintenance and replacement.
- 4 3-Stage of impact plate arrangement assures increased material impact thus permitting high reduction ratio with graded cubical product and size distribution.
- 5 Impact plates are made of superior abrasion resistance material thus permitting extended service life and reduced inventory.
- 6 Thickness and material quality of impact plate is specially selected to meet the type of feed material to be crushed.
- 7 Inverter type drive motor is provided to vary the product size distribution as required.

Construction

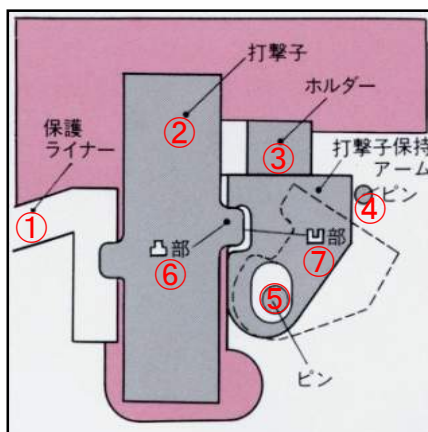


- ① 1-stage impact plate
- ② 2-stage impact plate
- ③ 3-stage impact plate
- ④ Rotor
- ⑤ Blow bar
- ⑥ Front door
- ⑦ Rear door

Specification

Model	Inlet Opening (mm)	Feed Material Size (mm)			Capacity (t/h)	Motor (kW×P)
		W	L	H		
NCD1B	1,140 × 900	600	800	200	50 ~ 200	55 ~ 90
NCD2C	1,490 × 900	600	800	300	80 ~ 280	95 ~ 150

Detail of Blow bar Locking



- ① Protection liner
- ② Blow bar
- ③ Holder
- ④ Blow bar locking arm
- ⑤ Pin
- ⑥ Convex part
- ⑦ Concave part